

Projects and Opportunities in the Greater Southeast Management District

January 2025



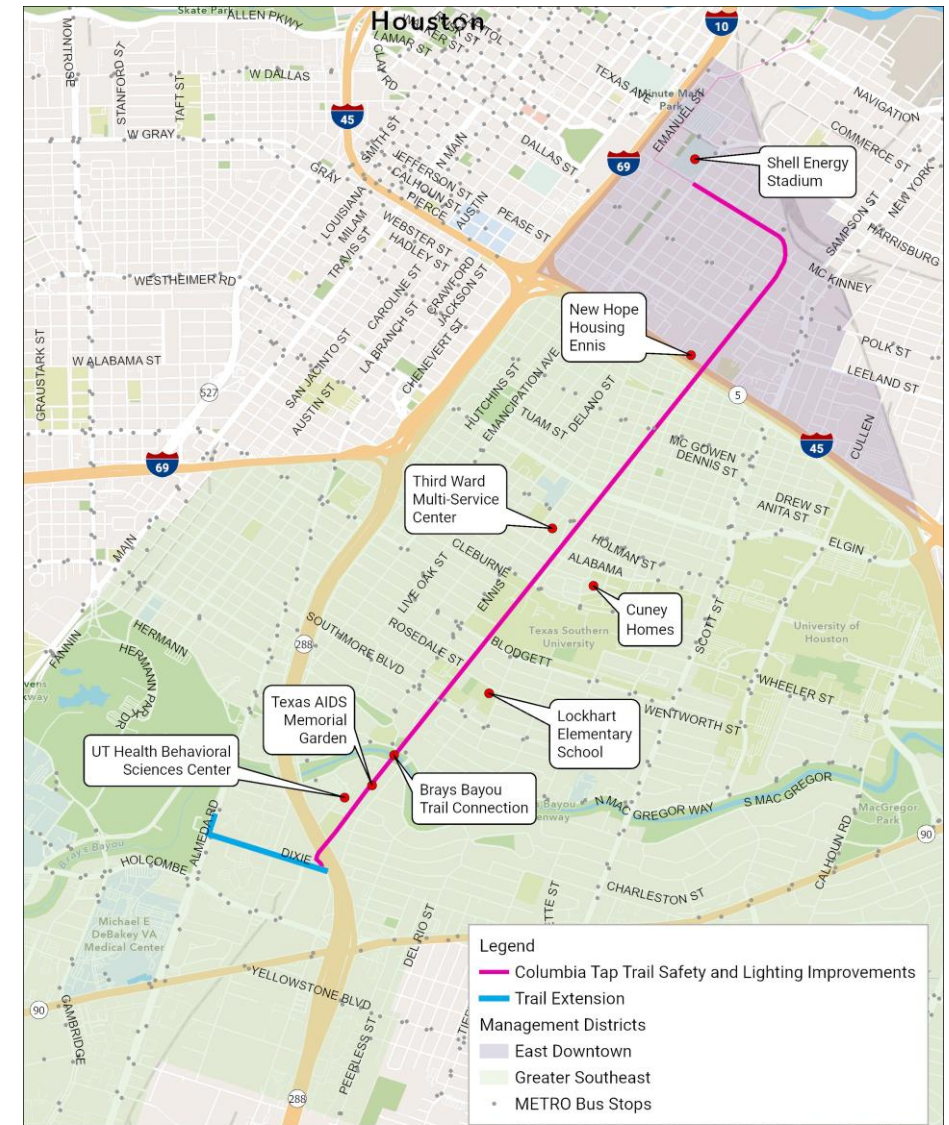


Agenda

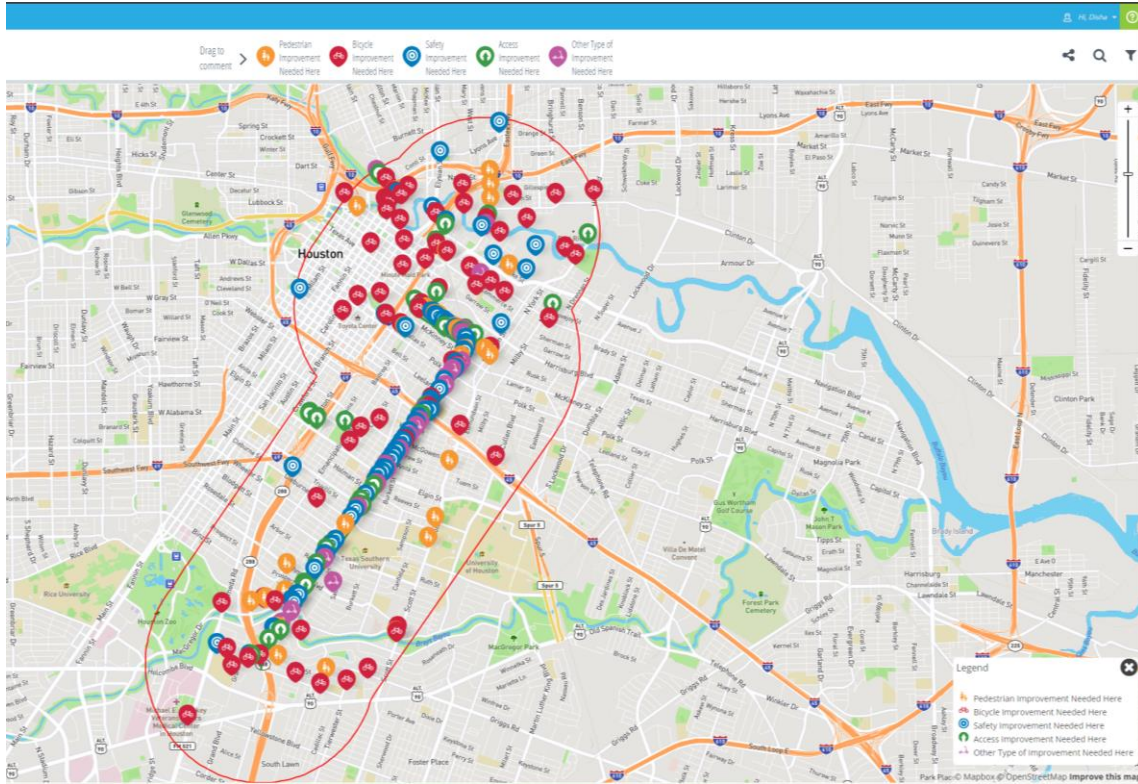
- Columbia Tap Trail Improvements
- Bus Shelter Improvements
- North Houston Highway Improvement Project
- Long, Griggs, and Mykawa Railroad Improvements
- Neighborhood Greenways and Connectivity
- Transportation Safety Projects
 - Almeda Road
 - Brays Bayou
 - Thompson Elementary School
- Banners and Branding

Columbia Tap Trail Improvements

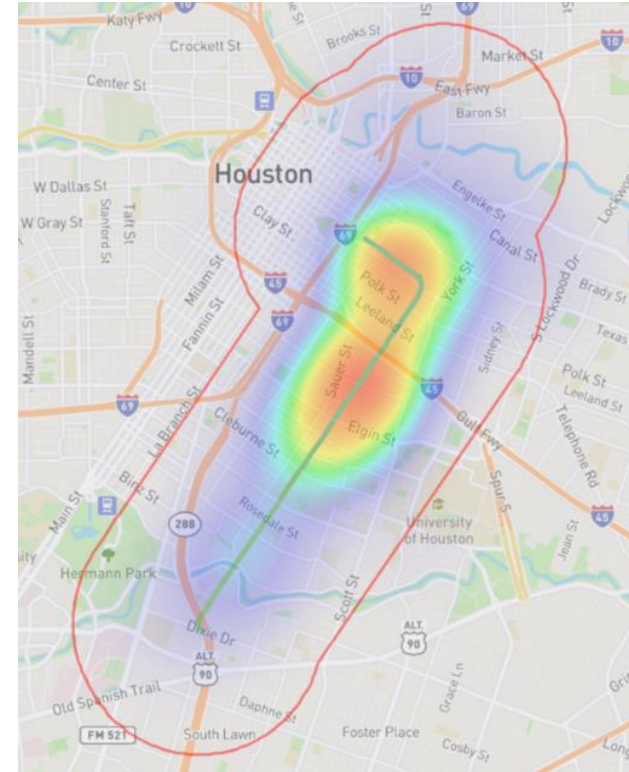
- Partnership between East Downtown Management District, East Downtown Redevelopment Authority and the Greater Southeast Management District
- \$7.5M in funding awarded
- RFQ underway to procure landscape/engineering services
- Timing subject to grant and associated administrative processes; objective to improve corridor prior to World Cup (May 2026)



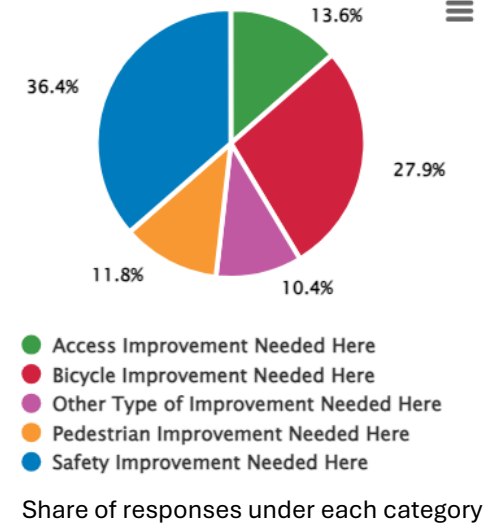
Columbia Tap Trail Improvements



Screenshot of the tagged interactive map



Map showing the concentration of community input received highlighting lack of safety



Share of responses under each category

Bus Shelter Improvements

Goals

- Improve stops without present amenities (shelter, trash can, seating, etc.)
- Select feasible locations equitably and strategically
- Leverage past/existing projects in the area
- Avoid stops with existing amenities – in other words, create net increase in transit stop quality in the district

Phase I (2021 - 2022) – Completed

- 8 full size shelters installed

Phase II (2023 - 2024) – Completed

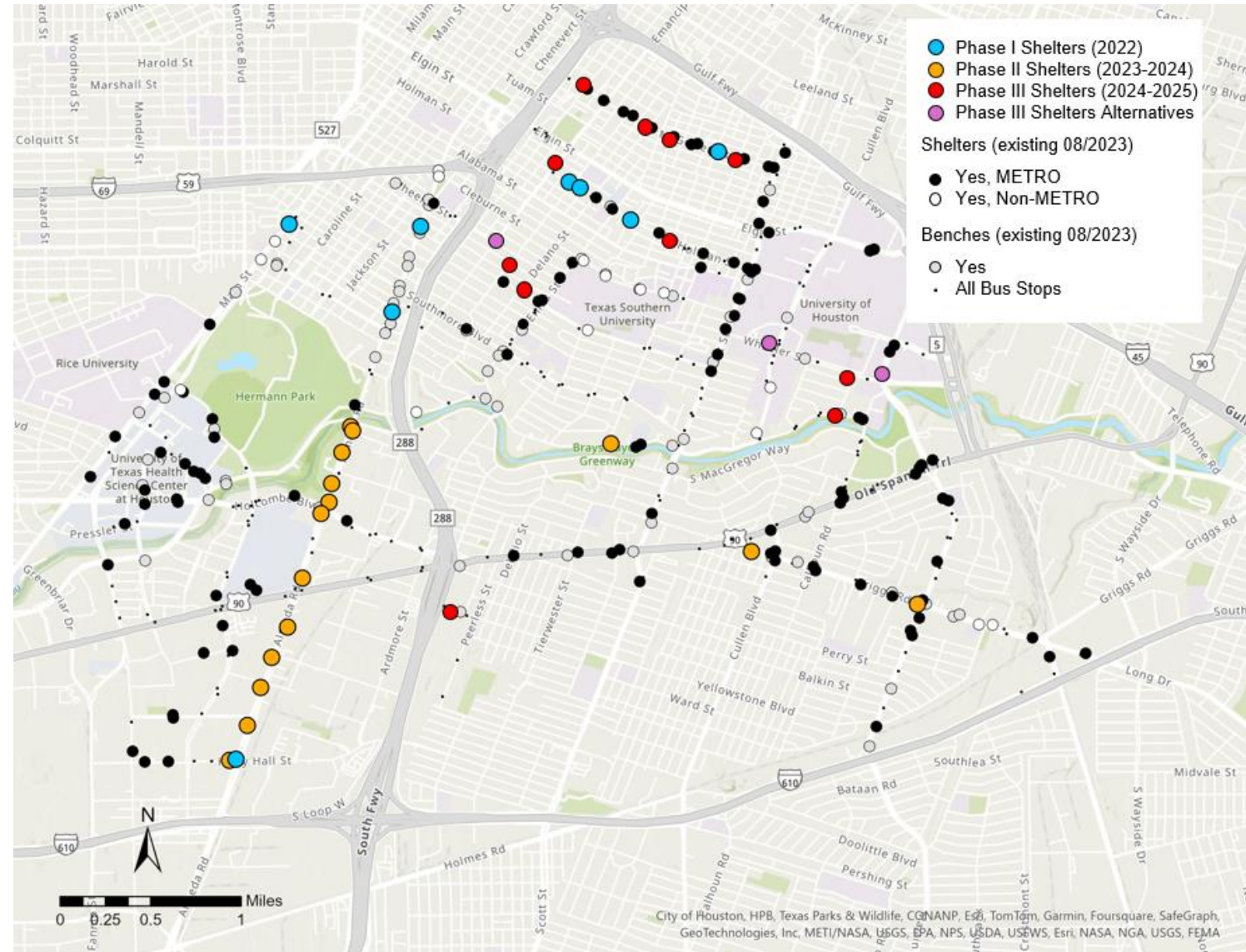
- 1 full size shelter installed
- 14 mini shelters installed

Phase III (2025 - Present) – Ongoing

- 11 mini shelters

Phase IV (2025 – Present – Ongoing

- Additional mini shelters
- Shade structures



Bus Shelter Improvements



Existing Pad Conditions



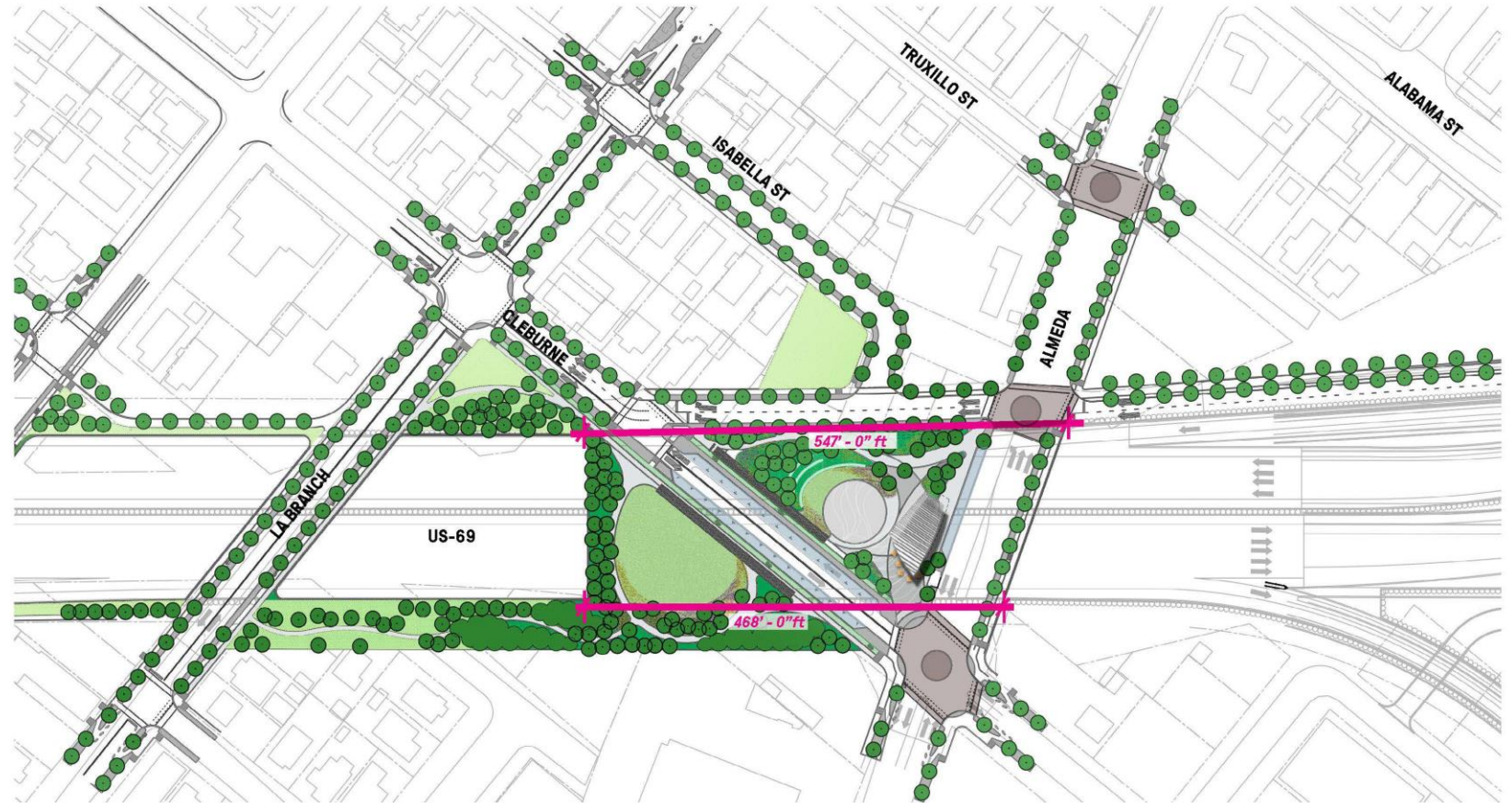
Bus Shelter Improvements



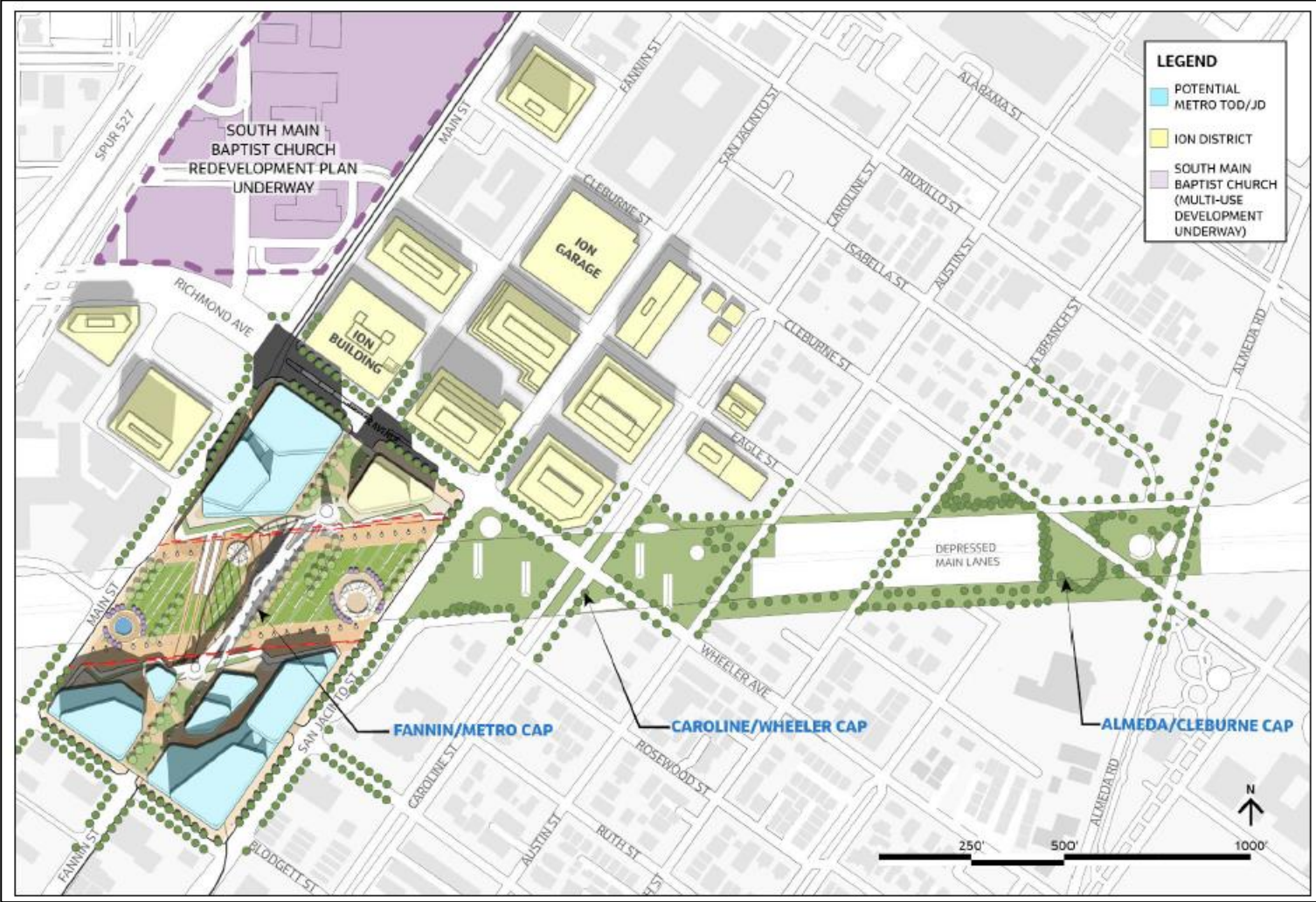
North Houston Highway Improvement Project

- Worked in partnership with COH to secure ~\$80M in funding to ‘fill the gap in the cap’ and to accommodate improvements to Elgin, Tuam, and McGowen bridges.

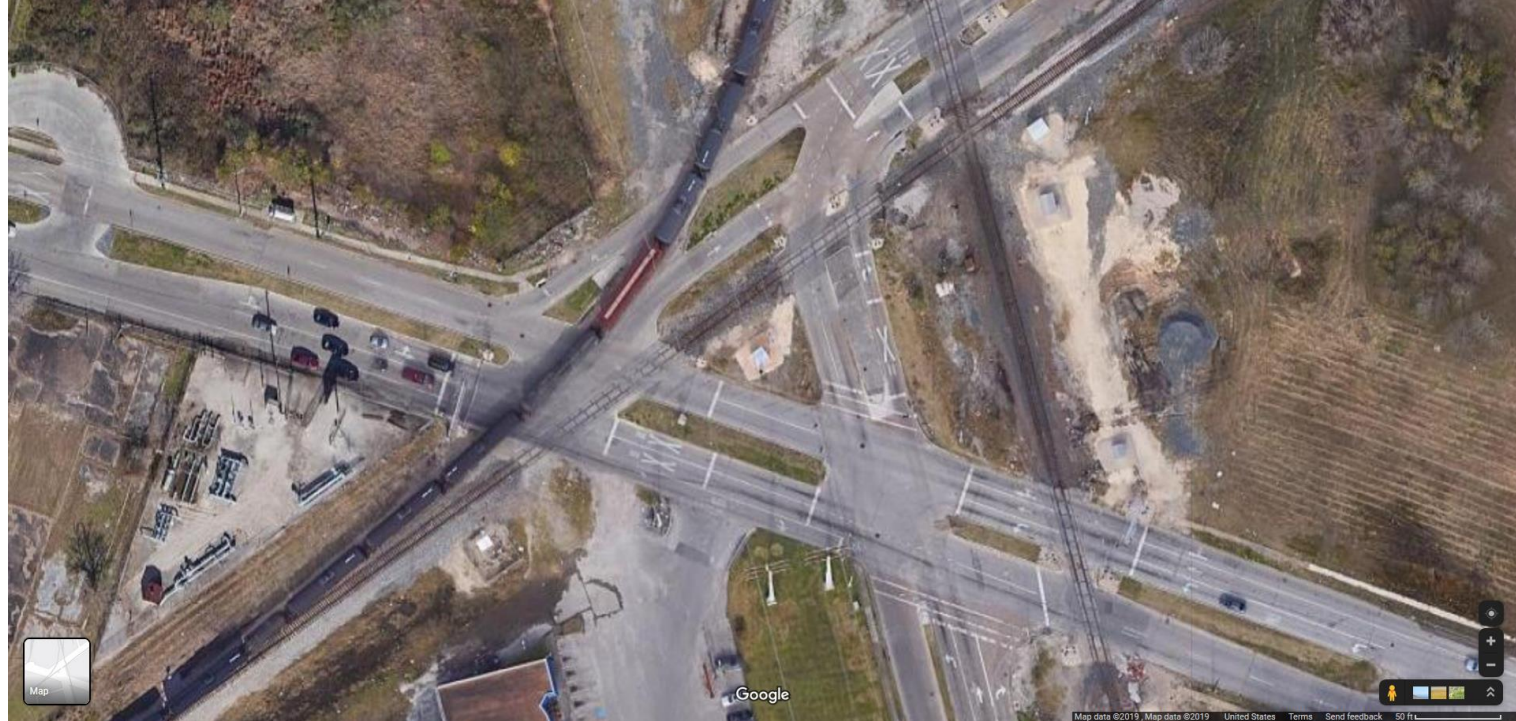
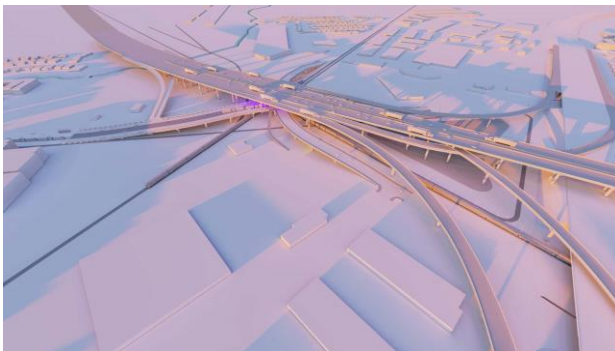
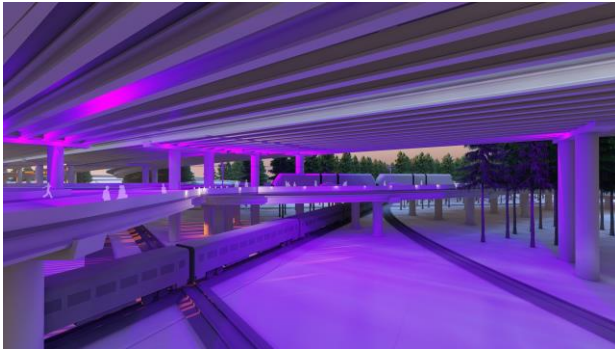
SCHEME D - CLEBURNE/ ALMEDA
CAP PARK FULL BUILD



North Houston Highway Improvement Project

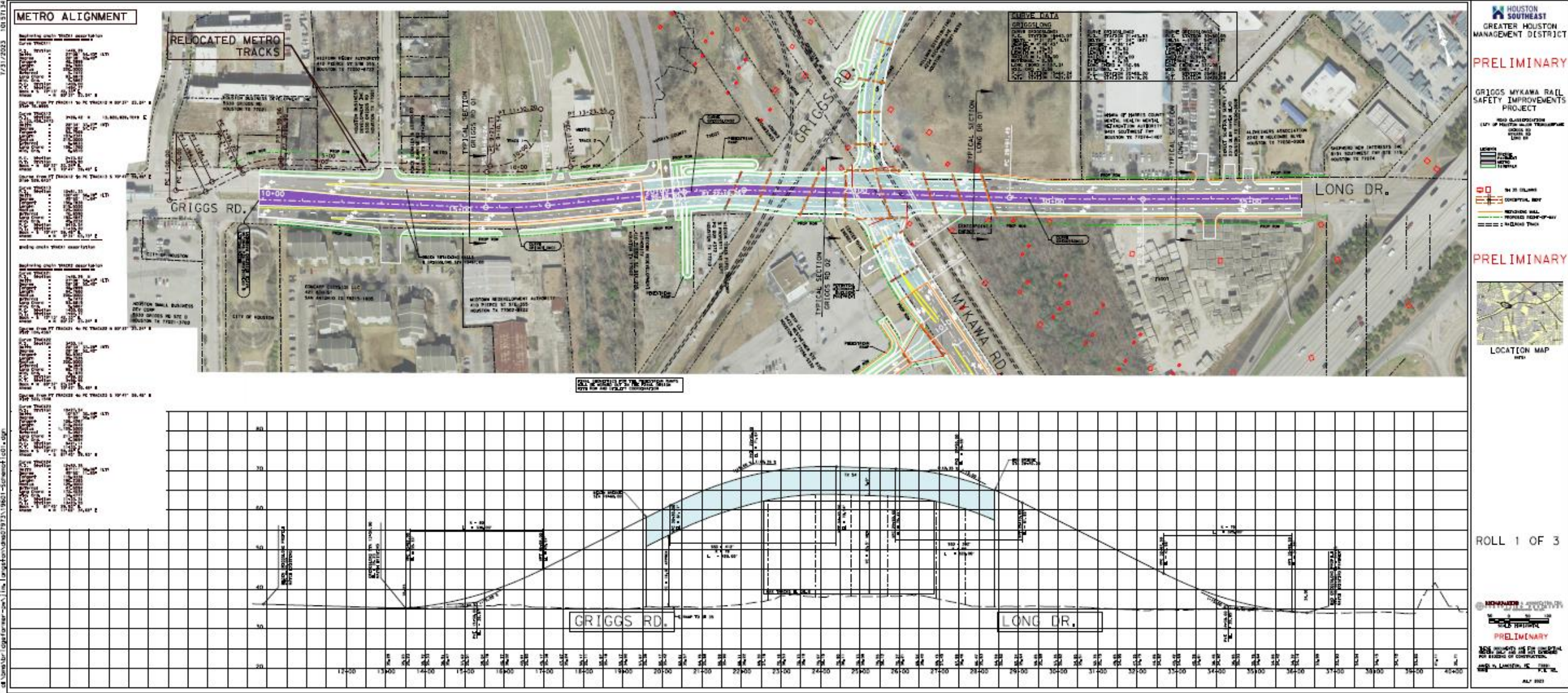


Long, Griggs, and Mykawa Railroad Improvements



- 30% design complete
- TxDOT incorporating improvements into SH-35 project design
- TxDOT Rail Division and others pursuing construction funding - ~\$100M

Long, Griggs, and Mykawa Railroad Improvements



Neighborhood Greenways and Connectivity

Born out of **2015 Strollin' and Rollin'**: A community initiative that identified **quiet, low-traffic** neighborhood for residents to move around the neighborhood desirable locations without having to do so on the area's high-volume corridors:

- Sharrow lane markings
- Signage
- Crosswalks
- pedestrian crossing improvements
- Sidewalks
- Ramps
- Bike racks

Connecting schools, parks, major transit stops, YMCA, public library, social services



Bicycle Crossing



Greenway Signage



Ped/Bike HAWK Signal

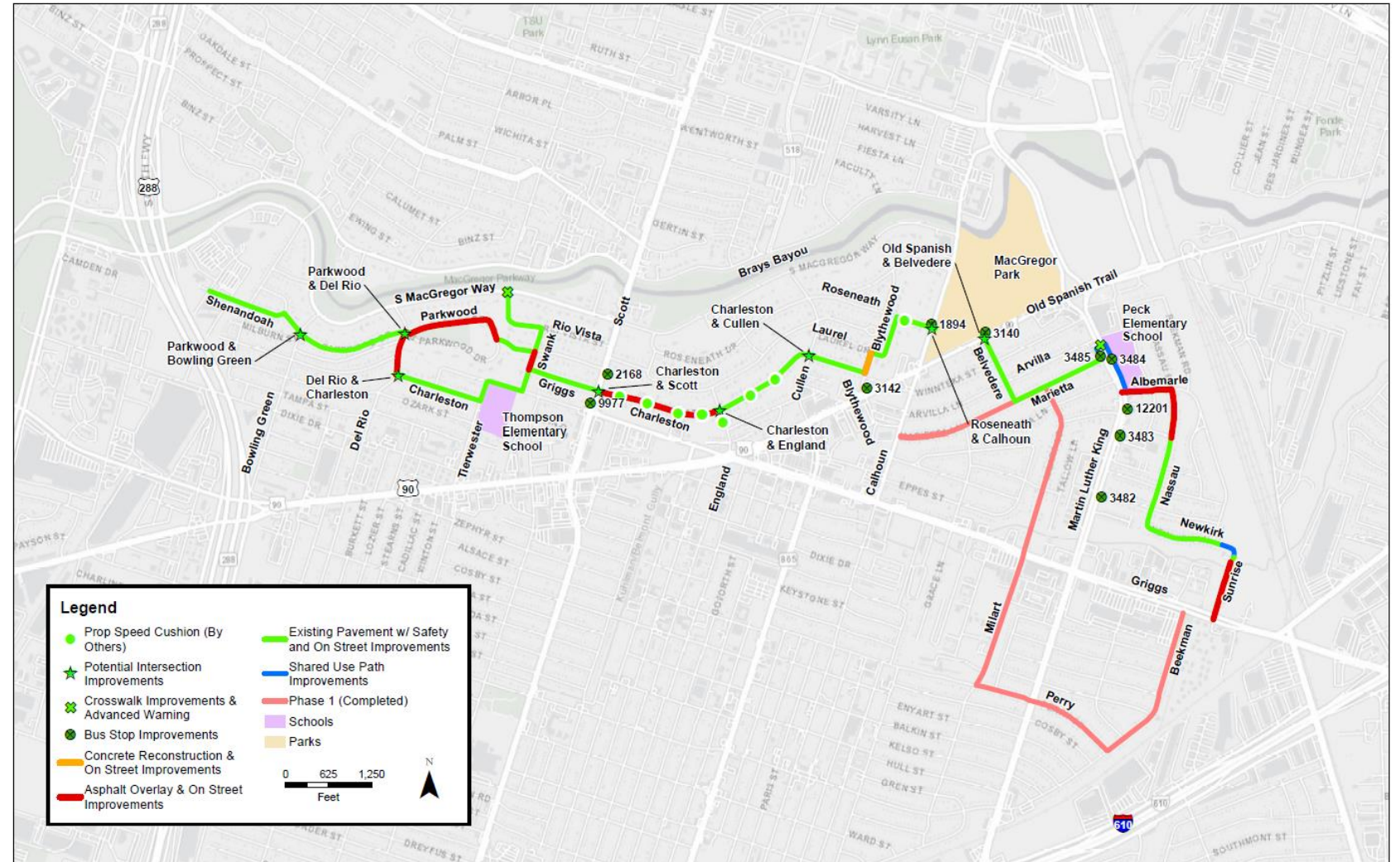


Sharrow Markings

Source images: National Association of City Transportation Officials
Accessed Feb 2023 www.nacto.org

Neighborhood Greenways and Connectivity

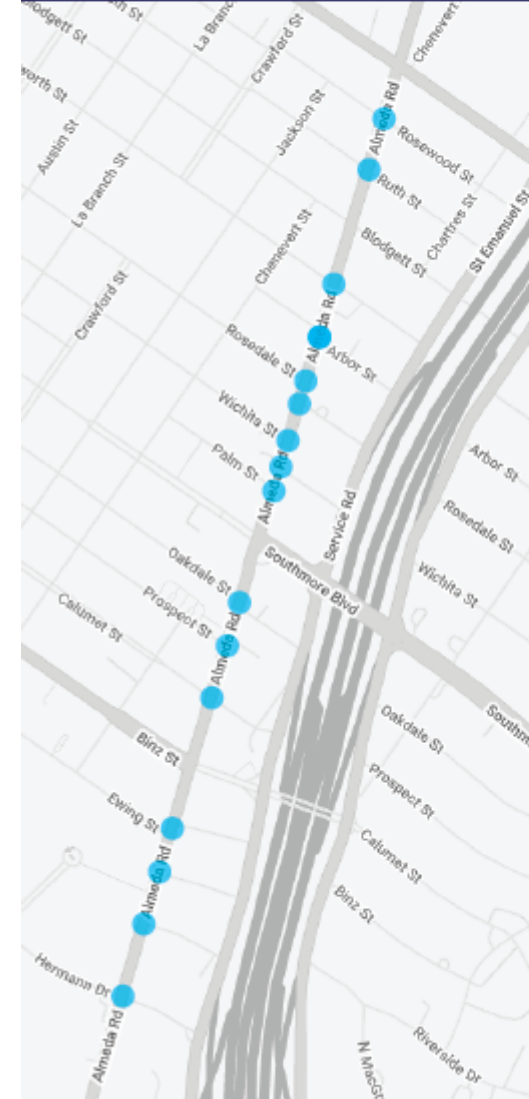
- Project at 30% design
- Recently received COH concurrence with the exception of the proposed shared-use path improvements
- Funded by a blend of FTA and HUD grant funds by COH



Transportation Safety Projects

- Alameda Road Intersections and Crosswalks – construction in progress
- Brays Bayou Safe Crossings – fully designed, funding just paused by TxDOT and COH
- Thompson Elementary SRTS – design in progress, funding just paused by TxDOT and COH

CONSTRUCTION WORK IN PROGRESS



● Intersection Improvements

Alameda Road Intersection Improvements

Pedestrians will experience partial closure of sidewalks, with right most lanes potentially closed for traffic at intersections as necessary. Temporary access and traffic control will be provided through construction.

The Project will improve pedestrian safety by installing new bi-directional ADA ramps, curb extensions/bulb-outs, pedestrian refuge islands, and crosswalks at intersections, enhancing safety for all road users.

Limits

Between Rosewood St and Hermann Dr/MacGregor Way on Alameda Road

Timeline

December 2024 - February 2025

Contact TxDOT - West Harris Area Office for more information at 281-610-4531

Never Miss an Update!

Visit <https://houstonse.org/> for more information.



Brays Bayou Safe Crossings

Funding Source:

Highway Safety Improvement Program (HSIP)

Est. Construction Cost: \$300,000

● Intersection Projects

crosswalk and pavement markings

N McGregor Way & SH-288 Service Rd

S McGregor Way & Rio Vista

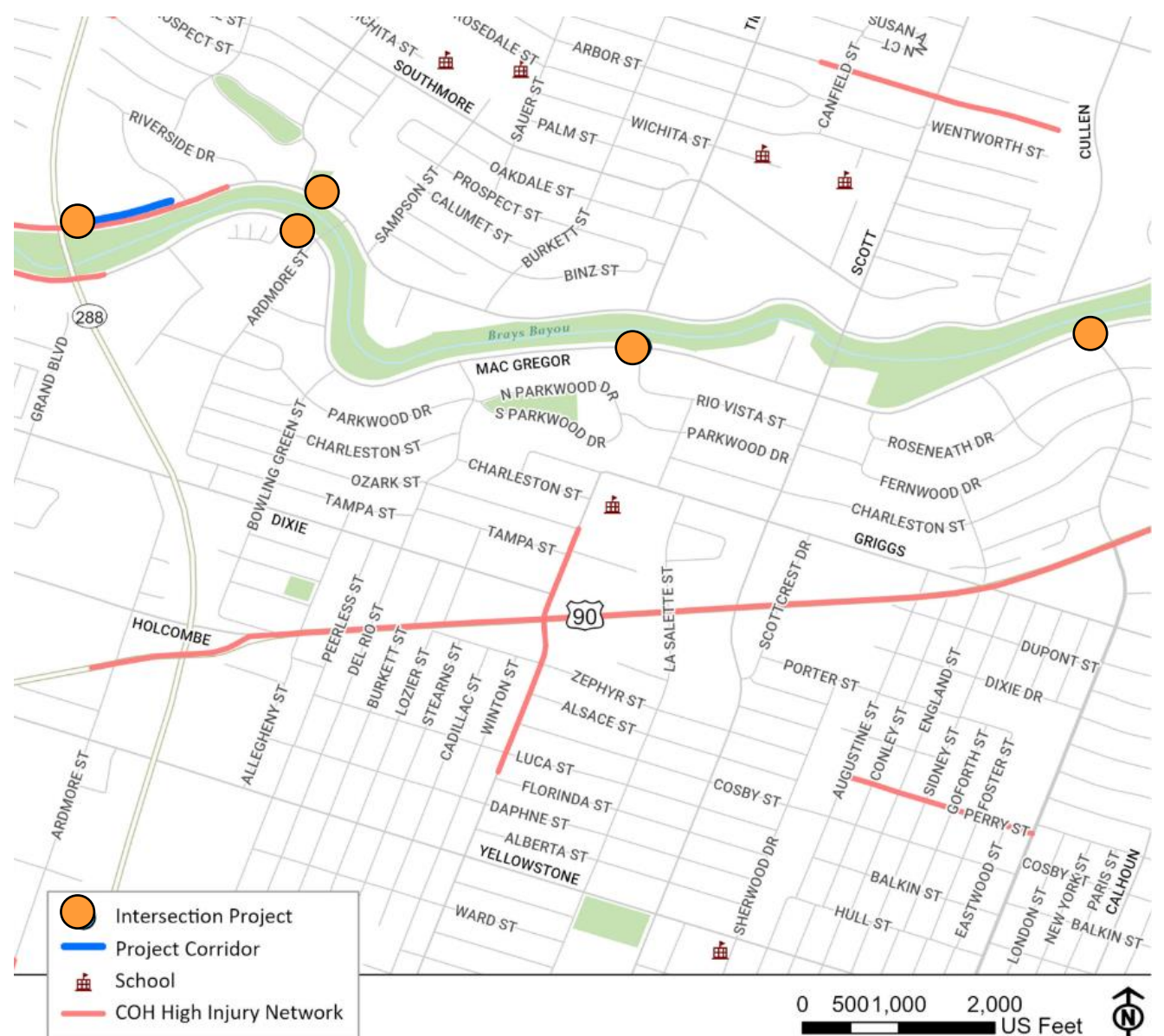
S McGregor Way & Cullen Blvd

N/S McGregor Way & Columbia Tap Rail Trail

▬ Shared-Use Path / Sidewalk work

Along south side of N McGregor Way from trail to intersection

♿ Upgrade ADA Ramps



Brays Bayou Safe Crossings



N MacGregor Way & SH 288 Service Rd



N/S MacGregor Way & Columbia Tap Rail Trail



Thompson Elementary Safe Routes to School

Funding Source:
Highway Safety Improvement Program (HSIP)

Est. Construction Cost: \$460,000

● **Intersection Projects**
crosswalk and pavement markings

Griggs Rd & Tierwester St
Griggs Rd & Swank St
Griggs Rd & La Salette St

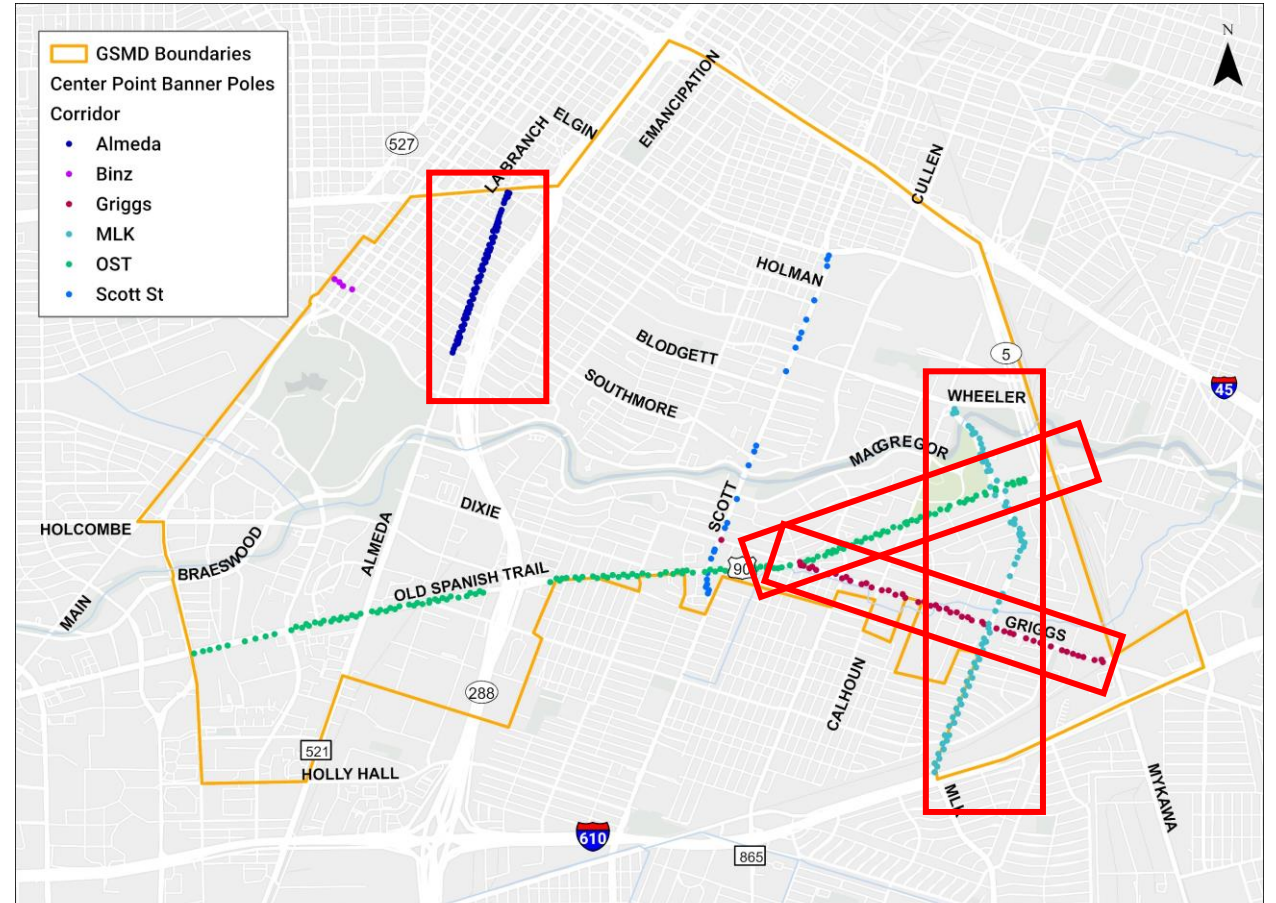
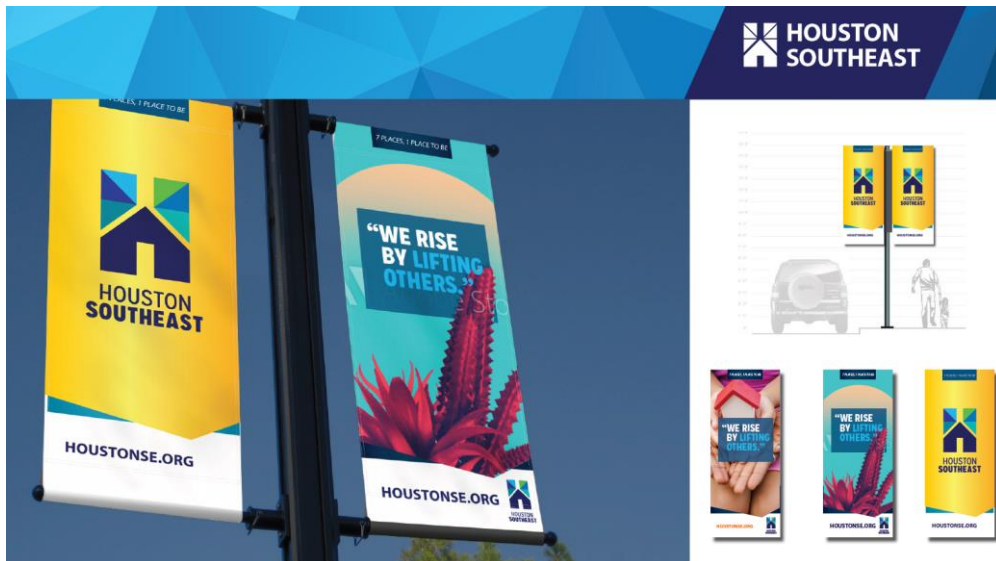
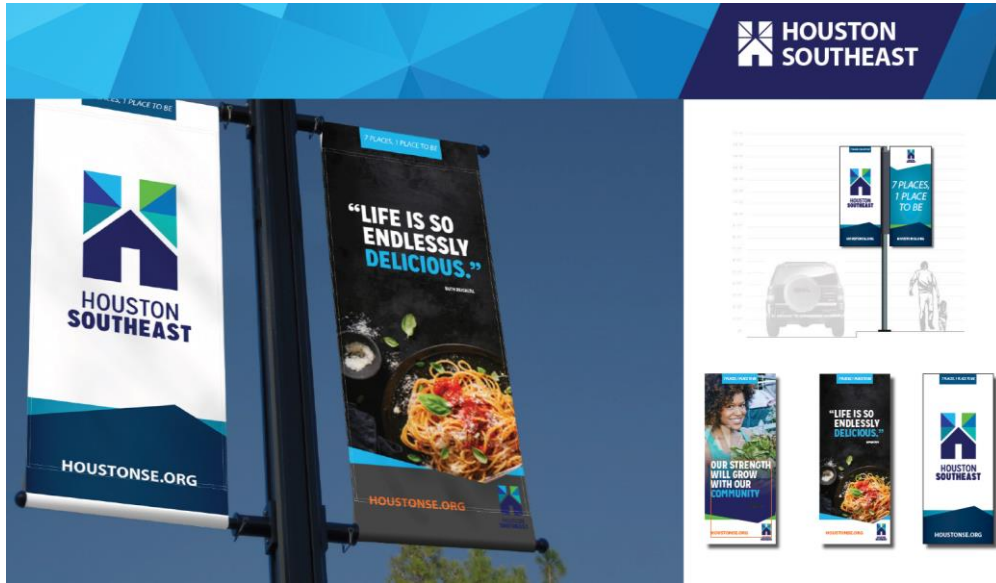
▬ **Sidewalk work**

Along north side of Griggs Rd from
Tierwester St to Scott St

♿ **Upgrade ADA Ramps**



Banners and Branding – Almeda, Griggs, and MLK (225#)



GSMD: Banner Location

